

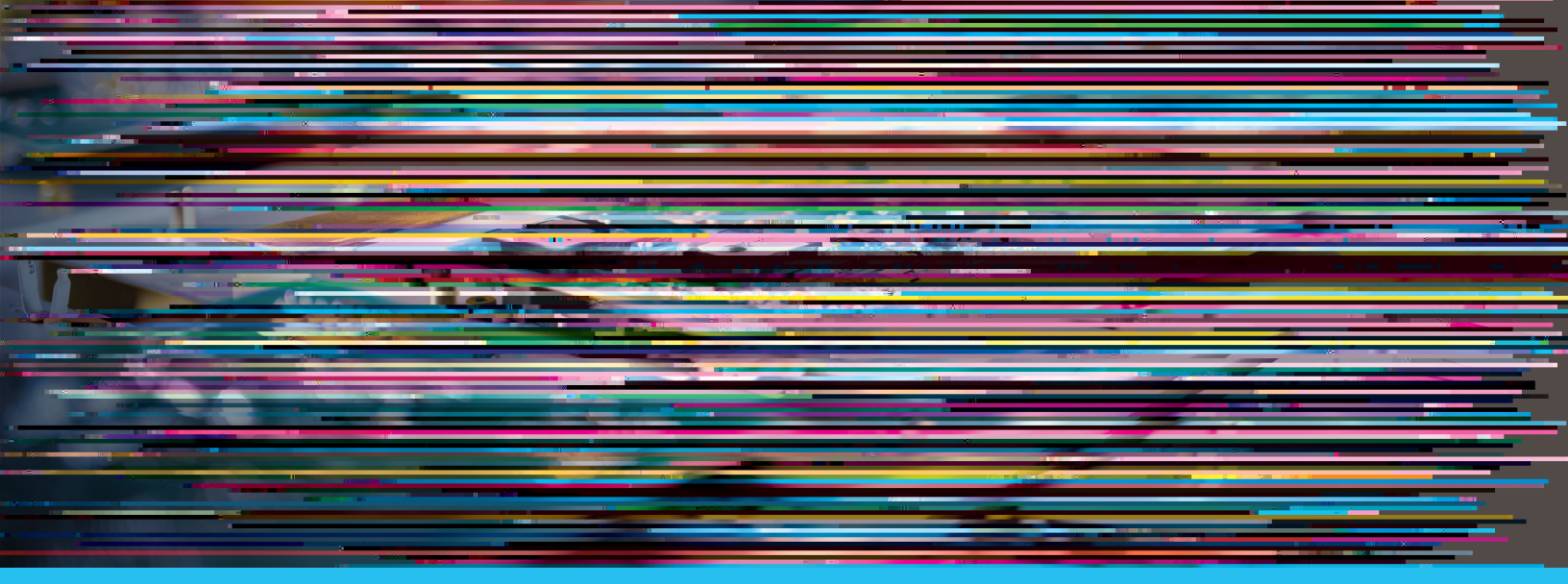


A wholly owned subsidiary of Fuji Corporation out of Nagoya, Japan, Fuji America is headquartered in Mount Vernon, Ill., where it has been designing and building electronic circuit board assembly equipment for more than four decades. Strengthened by its machines' reputation for endurance and reliability, Fuji America has become the world's largest supplier of SMT equipment.

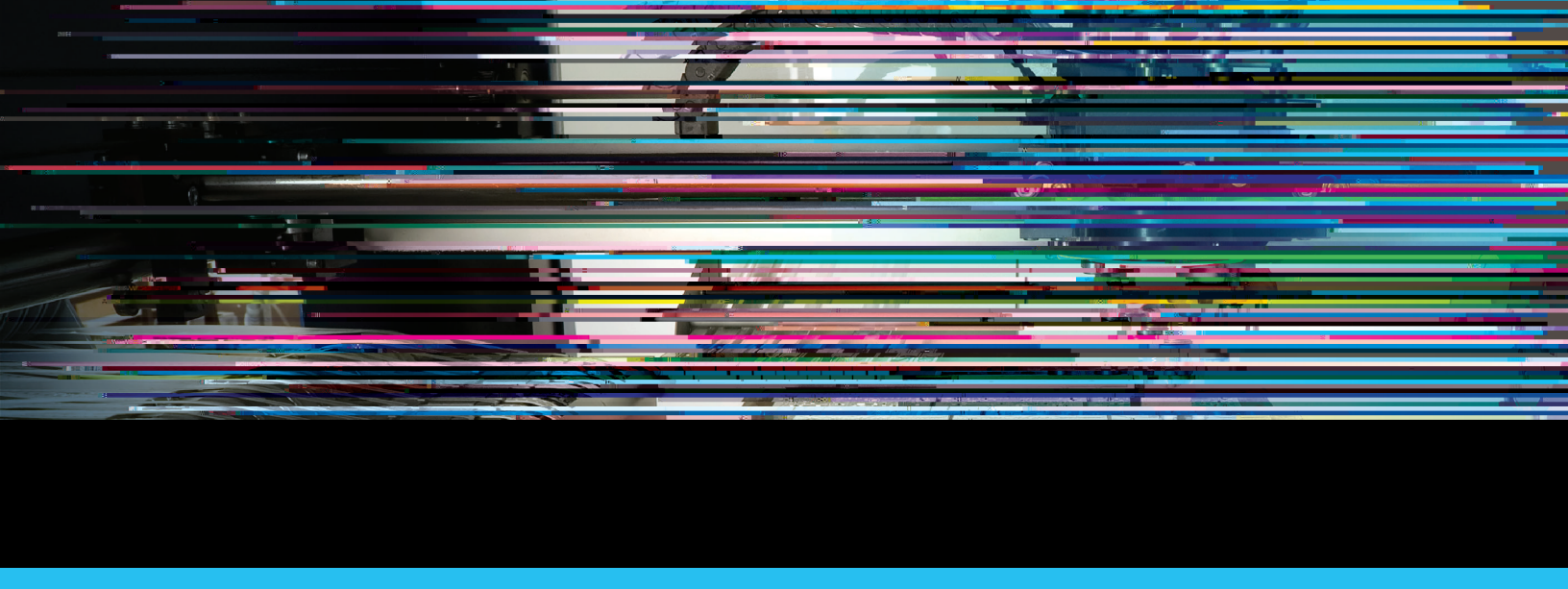
Since launching its partnership with Jabil in 1984, Fuji America has continued to play an essential role in Jabil Manufacturing by providing innovative PCB surface mount pick and place assembly solutions.

"Trends in the PCB industry are constantly evolving placing pressure on companies like Jabil to evolve in parallel in terms of scale and technological capabilities. Partnering with Fuji enables us to respond with speed to meet the demands of our customers," Kurt Shafer, Supply Chain Management Director at Jabil, says.

"We were on the leading edge of technology with our platform of equipment and



OM ABKIE  IC



"Jabil is pushing us as a supplier to do better, to be more competitive, to supply the technology to the world."